

# Fluid-o-Tech magnet drive gear pumps MGC3-MGC7-MGC28 AC pump/motor units



The “MG200” Series magnet drive gear pumps are compact precision performance pumps for high technology applications.

The magnet drive principle provides a totally sealed pump chamber which

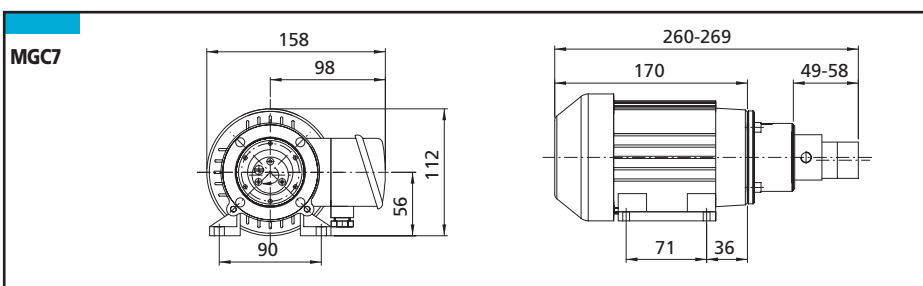
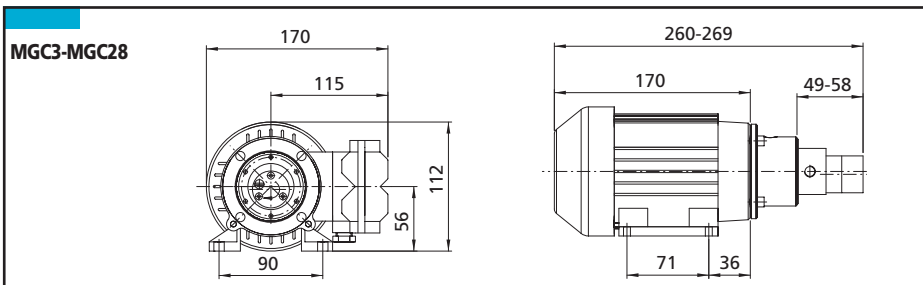
is capable of handling a wide range of corrosive liquids with a high degree of safety. The pump housing is available in AISI 316L, SAF 2205 or AISI 303. The Gears are available in PTFE or Peek™.

In operation the MG200 Series pumps are noiseless, pulsation-free and capable of handling relatively high temperature liquids i.e. 120 °C (248 °F) with a low coefficient of expansion.

The coupling with the MGC3 and MGC7 AC units designed for heavy duty, provides a reliable and noiseless operation in a compact size package. The pole-to-pole alignment of the two magnets provides the driving motion to the pump. Decoupling will occur when the pump load exceeds the coupling torque between the magnets.

- 1/8" NPT or GAS ports
- Relief valve available upon request

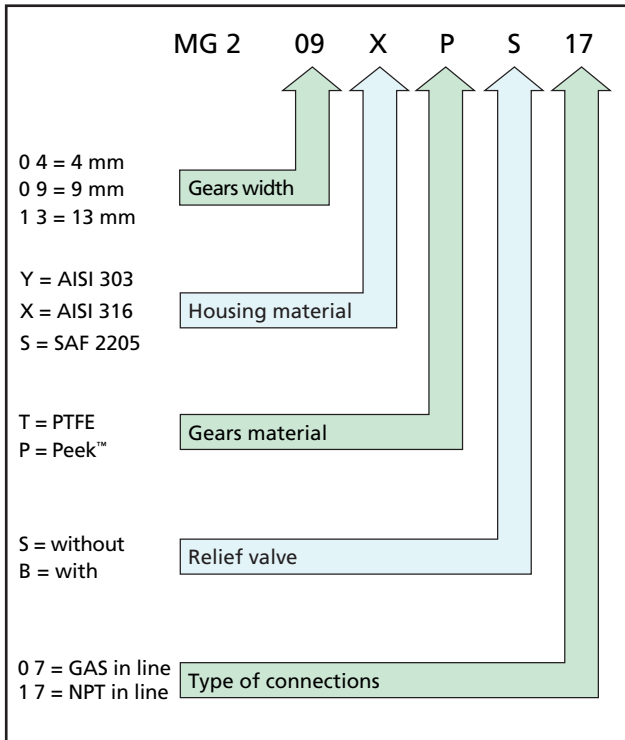
## MGC3-MGC7-MGC28



### Main Applications

- Medical and surgical equipment
- Hemodialysis apparatus
- Seal flush
- Laser apparatus
- Lubrication
- “Ink-jet” printing systems
- Cooling systems
- Laboratory instrumentation
- Water purification and ultra-filtration
- Sampling
- Food processing equipment

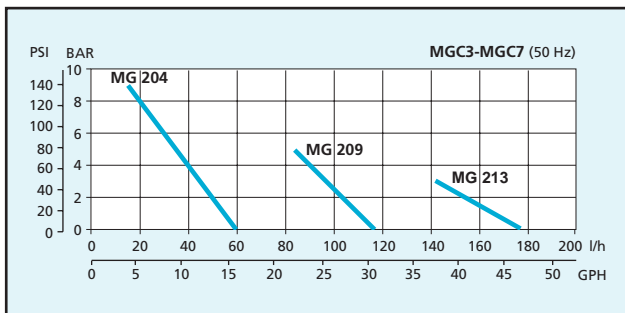
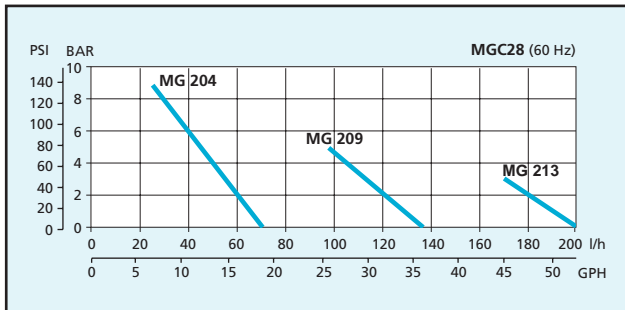
# Fluid-o-Tech magnet drive gear pumps MGC3-MGC7-MGC28 AC pump/motor units



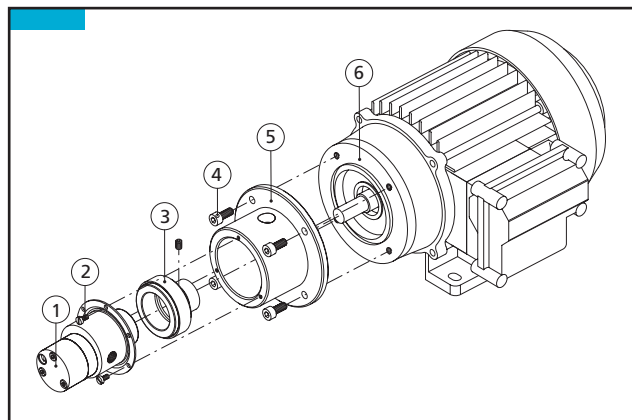
Composition materials			Technical informations	
Housing	Gear	Seal	Temperature range	Max system pressure
AISI 316	PTFE	PTFE	-45 to 50 °C / -49 to 122 °F	20 bar / 290 psi
AISI 316	peek™	PTFE	-45 to 120 °C / -49 to 248 °F	20 bar / 290 psi

Drive type	MGC3	MGC7	MGC28
Voltage (V)	220 AC	220/380 C	110 AC
Frequency (HZ)	50	50	60
Poles	2	2	2
Rated speed (rpm)	2.610	2.710	3.550
Current consumption (A)	1,2	0,92/0,53	1,27
Output power (W)	110	90	110
Pump motor weight (kg)	3,3	2,5	3,3

Pos.	Description	Features	Code
1	Pump	-	-
2	Screws	M3 X 6 AISI 304	6210030
3	Driving magnet	MGA09 (9 mm bore)	1250040
4	Screw	M5 X 12 galvanized	6350010
5	Flange	aluminium M56 B14	5230000
6	Motor for MGC3	220 AC single phase	6910000
	Motor for MGC7	220/380 V AC three phase	6910002
	Motor for MG28	110 V AC single phase	6910320



Notes: Characteristics with water at 20 °C and without by-pass, max vacuum mm Hg 724  
Use filter before pump inlet not larger than 20 microns  
Temperature requirements different from ambient temperature must be mentioned on the order  
**SPECIFY PUMP MODEL WHEN ORDERING THE UNIT**



Fluid-o-Tech reserves the right to alter the specifications indicated in this catalogue at any time and without prior notice

MGC3-7-28 – 09/04 Ed.



Via Morimondo, 23  
20143 Milano - Italy  
Tel. (39) (02) 8917071  
Fax (39) (02) 89170799

161 Atwater St.,  
Plantsville CT (USA) 06479  
Tel. (1) (860) 276-9270  
Fax (1) (860) 620-0193

203, 2-17-19, Ebara, Shinagawa  
Tokyo 142-0063, Japan  
Tel. (81) (0) 3-3783-9660  
Fax (81) (0) 3-3783-9661