

# Fluid-o-Tech high volume TM series rotary vane pumps



The Fluid-o-Tech TM family has widened its range of magnetic drive rotary vane pumps with the addition of the high volume TM series which combines the larger flow rate (500 to 1000 l/h at 1450 rpm or 160 to 330 GPH at 1725 rpm) with the added benefit of the magnetic coupling:

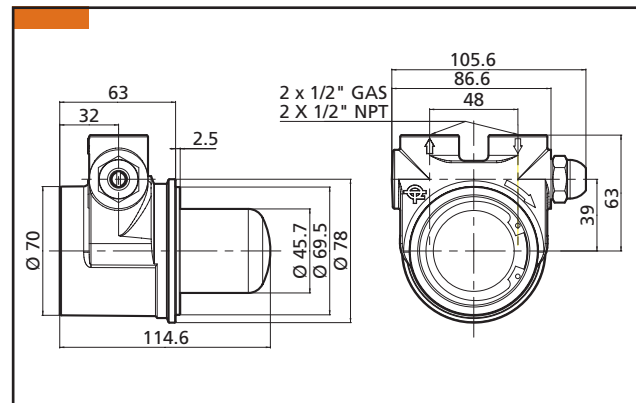
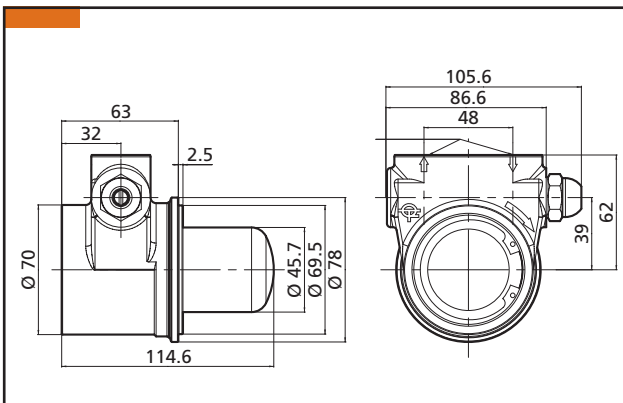
- longer service life
- no mechanical seals
- totally sealed body
- low maintenance
- less power consumption
- smooth transmission
- self priming

The rare earth magnet grants high performance and perfect alignment between the pump and the motor, extending the life of the unit.

The absence of friction, usually caused by the rotation of the mechanical seal against the ceramic seat, allows a more efficient operation and therefore a low power consumption.

The ROTOFLOW High Volume TM Series pumps offer multiple options to configure the product to the specific need of each customer. The housing is available in AISI 303 or brass. The internal components include AISI 303 rotor, carbon graphite pumping chamber and a choice of NBR, EPDM or Viton static seals.

- 1/2" GAS or NPT threaded ports
- Built-in relief valve
- Max speed: 1725 rpm
- Max size solid particles: 20  $\mu$
- Max system pressure: 18 bar (260 PSI)
- Max temperature: 70 °C (158 °F)

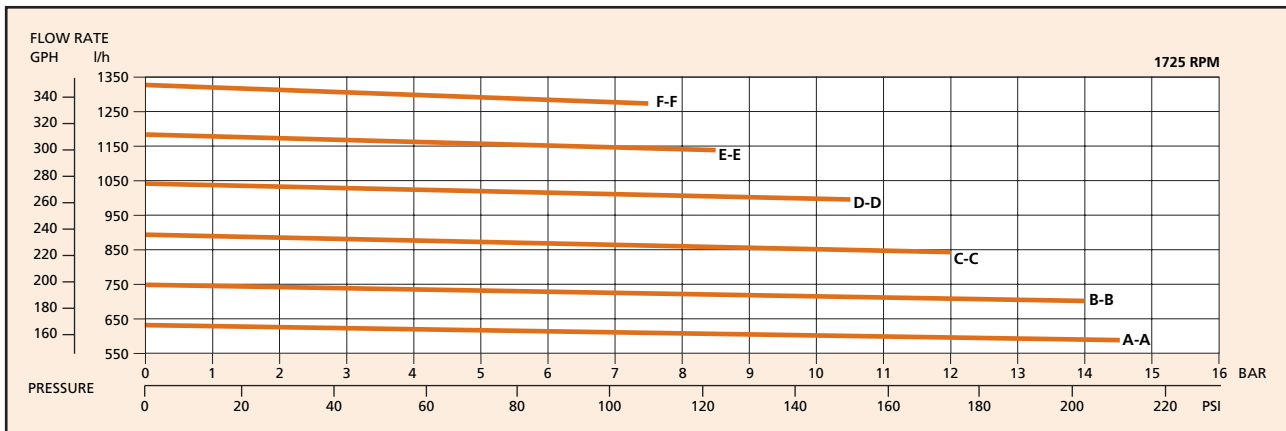
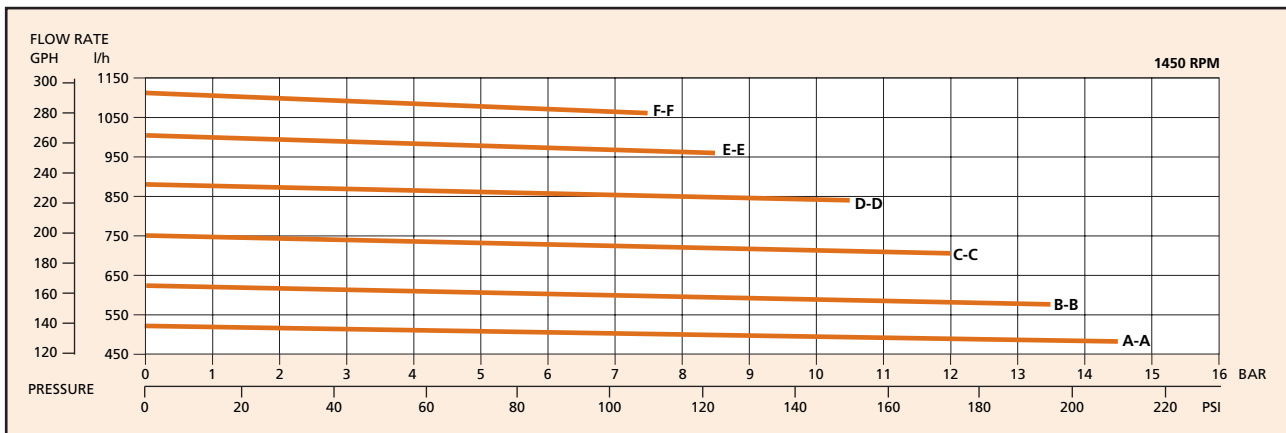
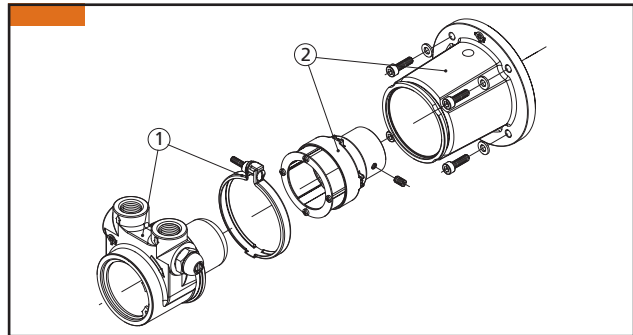


# Fluid-o-Tech high volume TM series rotary vane pumps

Model	By-Pass	Housing	Figure		
TMSS500	NO	STAINLESS STEEL	A-A		
TMSS600			B-B		
TMSS700			C-C		
TMSS800			D-D		
TMSS900			E-E		
TMSS1000			F-F		
TMSS501			STANDARD	STAINLESS STEEL	A-A
TMSS601					B-B
TMSS701					C-C
TMSS801					D-D
TMSS901	E-E				
TMSS1001	F-F				
TMOT500	NO	BRASS			A-A
TMOT600					B-B
TMOT700					C-C
TMOT800					D-D
TMOT900			E-E		
TMOT1001			F-F		
TMOT501			STANDARD	BRASS	A-A
TMOT601					B-B
TMOT701					C-C
TMOT801					D-D
TMOT901	E-E				
TMOT1001	F-F				

Pos.	Description	Assembly	Code	Driving magnet only	Code
1	TM high volume	-	-	-	-
2	M80-B14 frame motor assembly	TMB6	3330020	TMA 19 (19 mm bore)	3330030
	NEMA56C frame motor assembly	TMB7	3330040	TMA 5/8"	3330050

Note: The "C" series driving magnets provide a slot in the internal bore to accept the driving key of motors M56 and M63 frame.



Note: Characteristics with water at 20 °C and without by-pass - Use filter before pump inlet not larger than 20 microns - Pump weight: 2,1 kg  
 For applications involving other fluids, high temperatures, unusual processing conditions or speed higher than 2500 rpm consult the factory  
 or an authorized Fluid-o-Tech distributor  
 Fluid-o-Tech reserves the right to alter the specifications indicated in this catalogue at any time and without prior notice

TM HV - 09/04 Ed.



**Fluid-o-Tech**  
 PUMP TECHNOLOGY AT ITS BEST

Via Morimondo, 23  
 20143 Milano - Italy  
 Tel. (39) (02) 8917071  
 Fax (39) (02) 89170799

161 Atwater St.,  
 Plantsville CT (USA) 06479  
 Tel. (1) (860) 276-9270  
 Fax (1) (860) 620-0193

203, 2-17-19, Ebara, Shinagawa  
 Tokyo 142-0063, Japan  
 Tel. (81) (0) 3-3783-9660  
 Fax (81) (0) 3-3783-9661